

---

# COACH HOUSE

---

## **UK Packaging Legislation**

The UK government has introduced new legislation which means Coach House has to record the amount and type of packaging used on all products it sells.

Coach House will be unable to buy and sell any items where the weight and type of packaging are not known.

We need to ask you to provide Coach House with details of the type and weight of packaging used for each item.

In a separate email we have sent you a link to access our packaging portal where you are able to enter packaging weights and types for each of your items.

For any new items we will need packaging information at the time of ordering.

The notes and images below provide guidance on packaging types.

Thank you.

## **Packaging Types**

### **Primary Packaging**

Primary packaging is the packaging that is in direct contact with the product. Primary packaging is the packaging that most closely protects the product. Typically, these are inners.

### **Secondary Packaging**

Secondary packaging is designed to contain several primary packages (for example, several inners inside an outer. The inners would be primary packaging and outer would be secondary).

### **Tertiary Packaging**

Tertiary packaging enables more secondary packaging to be handled and includes pallets and pallet boxes for storing and warehousing.

Packaging may be card, paper, plastic, wood, glass, aluminium, steel, fibre, cork, cotton, flax, nitrile, rubber or silicone.

---

## Examples of Items with Primary Packaging Only



Cardboard box 2.5kg



Plastic (foam and wrapper) 0.15kg

All Primary packaging – cardboard (box) and plastic (foam and wrapper).

Packaging Type	Primary (inner)	Secondary (outer)	Tertiary (pallet box / pallet)
Paper / cardboard	2.5kg	-	-
Plastic	0.15kg	-	-



Cardboard box 1.7kg



Plastic (polystyrene, bag and wrapper) 0.14kg

All Primary packaging – cardboard (box) and plastic (polystyrene, bag and wrapper).

Packaging Type	Primary (inner)	Secondary (outer)	Tertiary (pallet box / pallet)
Paper / cardboard	1.7kg	-	-
Plastic	0.14kg	-	-

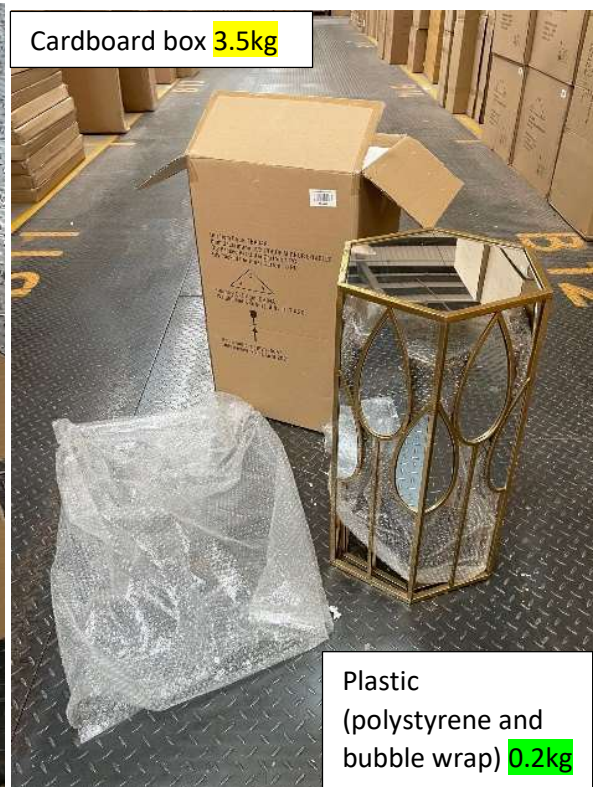




All Primary packaging – cardboard (box) and plastic (polystyrene and bubble wrap).



Cardboard box 3.5kg



Plastic (polystyrene and bubble wrap) 0.2kg

Packaging Type	Primary (inner)	Secondary (outer)	Tertiary (pallet box / pallet)
Paper / cardboard	3.5kg	-	-
Plastic	0.2kg	-	-



All Primary packaging – cardboard (box) and plastic (foam wrap).



Cardboard box 4.5kg



Plastic (foam wrap) 0.2kg

Packaging Type	Primary (inner)	Secondary (outer)	Tertiary (pallet box / pallet)
Paper / cardboard	4.5kg	-	-
Plastic	0.2kg	-	-

All Primary packaging – cardboard (box) and plastic (bubble wrap).



Cardboard box 2.1kg



Plastic (bubble wrap) 0.09kg

Packaging Type	Primary (inner)	Secondary (outer)	Tertiary (pallet box / pallet)
Paper / cardboard	2.1kg	-	-
Plastic	0.09kg	-	-



All Primary packaging – cardboard (box) and plastic (bubble wrap).



Cardboard box 3.15kg




Plastic (polystyrene and bubble wrap) 0.22kg

Packaging Type	Primary (inner)	Secondary (outer)	Tertiary (pallet box / pallet)
Paper / cardboard	3.15kg	-	-
Plastic	0.22kg	-	-

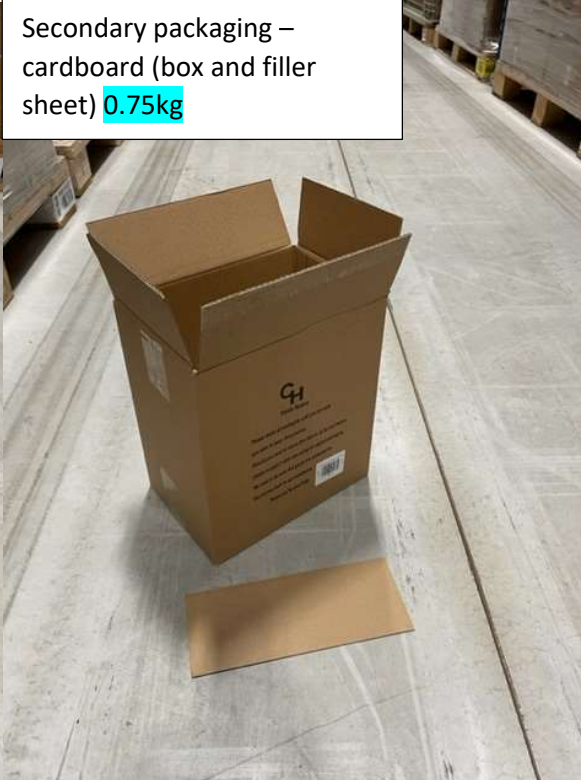


## Examples of Items with Primary and Secondary Packaging

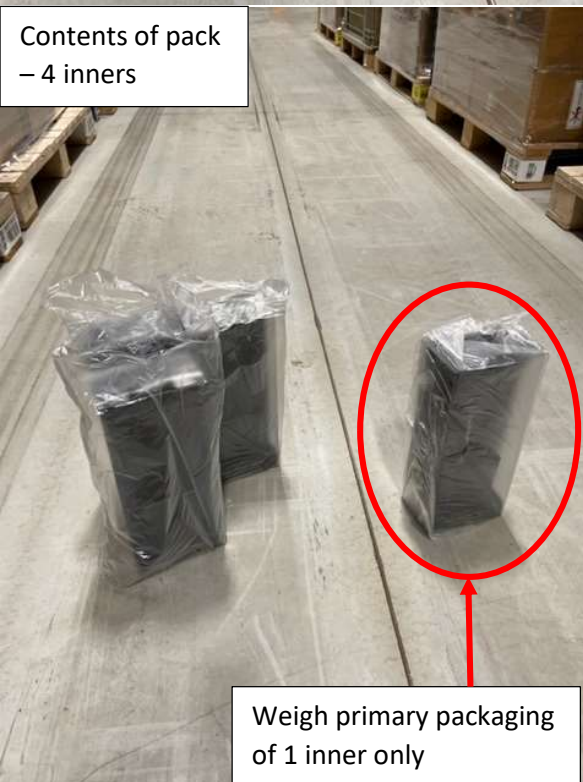
Pack of 4



Secondary packaging – cardboard (box and filler sheet) 0.75kg




Contents of pack – 4 inners



Weigh primary packaging of 1 inner only

Plastic (box cover and bag) 0.13kg



Cardboard (box and insert) 0.19kg

Packaging Type	Primary (inner)	Secondary (outer)	Tertiary (pallet box / pallet)
Paper / cardboard	0.19kg	0.75kg	-
Plastic	0.13kg	-	-



Packaging Type	Primary (inner)	Secondary (outer)	Tertiary (pallet box / pallet)
Paper / cardboard	0.25kg	0.52kg	-
Plastic	0.11kg	-	-





Secondary packaging – cardboard (box)  
2.48kg



Weigh primary  
packaging of 1 inner  
only



Cardboard (box and  
paper) 0.37kg

Steel (wire tie) 0.002kg

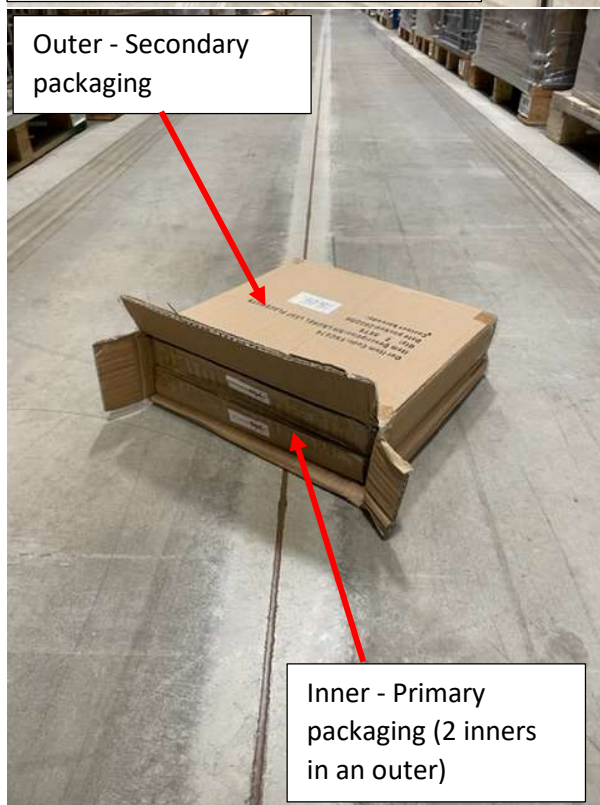
Packaging Type	Primary (inner)	Secondary (outer)	Tertiary (pallet box / pallet)
Paper / cardboard	0.37kg	2.48kg	-
Plastic	-	-	-
Steel	0.002kg	-	-



## Example of Item with Primary, Secondary and Tertiary Packaging

Placemats

2 inners a carton (132 in a pallet box)





Packaging Type	Primary (inner)	Secondary (outer)	Tertiary (pallet box / pallet)
Paper / cardboard	0.178kg	0.295kg	6.00kg
Plastic	0.12kg	-	-
Wood	-	-	15.00kg